

MONTHLY MEMBERSHIP PROGRESS REPORT

District 20 E1

Results as of: 5/31/2024

GMT:

LOCATION NEW YORK

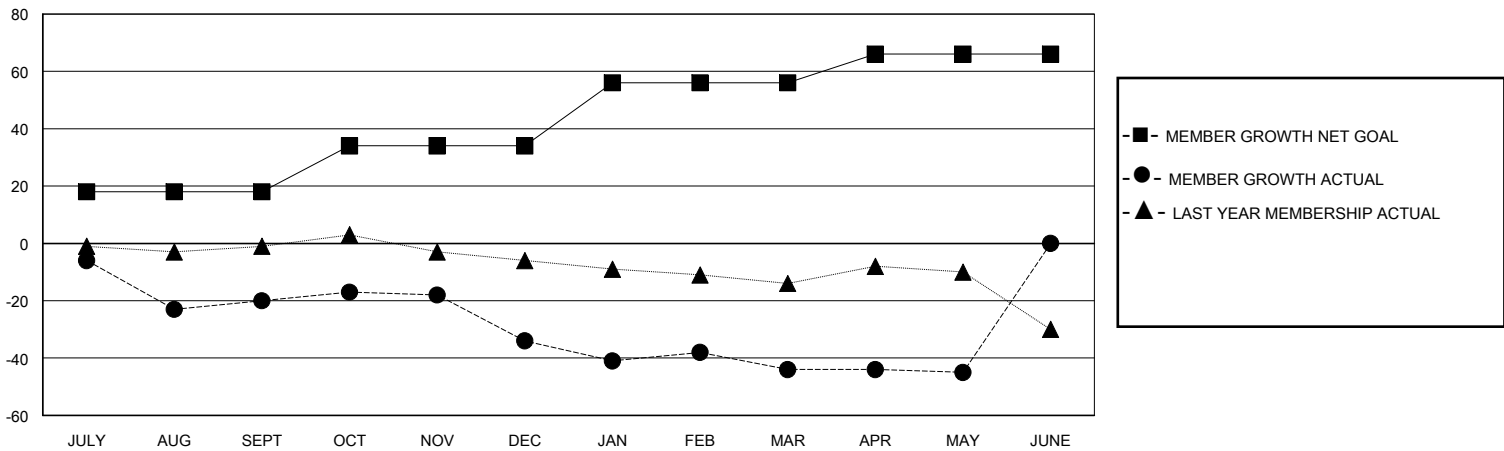
GMT CA

Clubs				Members			
RESULTS FOR 2023-2024				RESULTS FOR 2023-2024			
QUARTER	NEW CLUB GOAL	NEW CLUBS	DROPPED CLUBS	QUARTER	MEMBER GROWTH NET GOAL	MEMBER GROWTH ACTUAL	DROPPED MEMBERS ACTUAL (including transfers)
JULY/AUG/SEPT	0	0	0	JULY/AUG/SEPT	18	12	30
OCT/NOV/DEC	0	0	0	OCT/NOV/DEC	16	23	33
JAN/FEB/MAR	1	0	0	JAN/FEB/MAR	22	23	30
APR/MAY/JUNE	0	0	0	APR/MAY/JUNE	10	11	11

GOALS AND ACTUAL NEW CLUBS CUMULATIVE



GOALS AND ACTUAL MEMBERS CUMULATIVE



DROPPED CLUBS: 0	25 CLUBS OF 37 ADDED 1 OR MORE NEW MEMBERS	GENDER DISTRIBUTION MALE 813 (68.72%) FEMALE 369 (31.19%)
DROPPED MEMBERS DECEASED 17 CLUB CANCELLED 0 OTHER 87 TOTAL 104	CLICK HERE FOR CUMULATIVE MEMBERSHIP DATA	TOTAL FAMILY UNIT MEMBERS 205 FAMILY MEMBERS PAYING HALF DUES 104